

RC Electric Micro Helicopter



规格型号:

主旋翼直径: $\Phi 460\text{mm}$
 总重量: 约410g
 机身长: 510mm, 宽: 110mm, 高: 260mm
 电机型号: 370马达*2pcs
 装配: RTF
 发射机: 标准四通道发射机 (带教练开关,)
 混控系统: 接收机加三合一控制器
 伺服器: (重量: 7.5g, 扭力: 1kg.cm, 速度: 0.1s/60°)
 电池: 11.1V 800mAh 锂聚合物电池
 标准配备: 0.6A 充电器、电源适配器、干电池8个、备用桨2对。

Specification:

Main rotor diameter: $\Phi 460\text{mm}$
 Weight: About 410g
 Size: Length: 510mm, width: 110mm, height: 260mm
 Power system: 370 motor * 2 pcs
 KIT/ARF/RTF: RTF
 Transmitter: 4 CH (including training switch and simulator port)
 Mix controller: 3 in 1 controller
 Servo: Digital servos 7.5g, Torque: $\geq 1\text{kg}\cdot\text{cm}$, Speed: 0.1S/60°
 Battery: 11.1V 800mAh Li-polymer battery
 Standard accessories: 0.6A charger, adaptor, 2 pairs of spare oars, 8"AA" batteries.

设计特点:

配置两个370电机, 数字伺服器, 新式ESKY 4通道发射机/平衡杆采用铜质平衡锤, 更好的稳定直升机的各种飞行状态, 外壳采用丝印工艺, 色彩亮丽光泽度高/新型塑胶滑橇, 可以适宜不同起飞与飞行状态, 对初学者有很大的帮助作用. 在微风情况下可以进行室外飞行.

Product features:

Driven by two 370 super motors, equipped with digital servo and updated Esky 4ch transmitter/the copper counterweight of flybar stabilizes provides heli in various flight states, silk-printing process provides bright colored & high lustrous canopy/ New strengthful landing skid, suits in various take off & flight conditions and is helpful to the beginners. It's able to fly outdoors in breeze.

Transmitter and charging equipments in the packing box



000512 电源适配器
Switching adapter



发射机
Transmitter 4CH



000152 充电器
Charger



001336
Battery

The operation guide before fly

起飞操作步骤示意图



Step 1
Charge the battery
电池充电



Step 2
Put the battery into the battery holder
将电池装入电池架



Step 3
Draw out the antenna of transmitter completely
完全抽出发射机天线



Step 4
turn the transmitter on
打开发射机电源



Step 5
Set the throttle stick and the throttle trim to the lowest position and other trims to the center point
把油门摇杆和微调调至最低, 其他微调定位在中心点。



Step 6
Plug the battery into the battery lead of 4-in-1 wint
接通直升机电源



Step 7
Permanent light of green light is ready to fly
绿灯恒亮即显示待飞

Main blade angle of attack adjustment

E_sky®

主旋翼功角的调整



Main blades are not tracking in the same plane
主旋翼旋转不在同一平面



用左手抓住桨的根部，用右手捏住桨叶由里向外滑动，重复此动作。Please adjusting the main blade like this way until the tips are tracking in the same plane



Main blades rotate in same plane
主旋翼旋转在同一平面

Disassembling instruction

拆卸步骤



A 平衡杆拆卸
Stabilizer set disassembling



C 主旋翼拆卸
Plastic blade disassembling



E 机壳拆卸
canopy disassembling

Construction schematic diagram to inner equipments

机体局部设备示意图



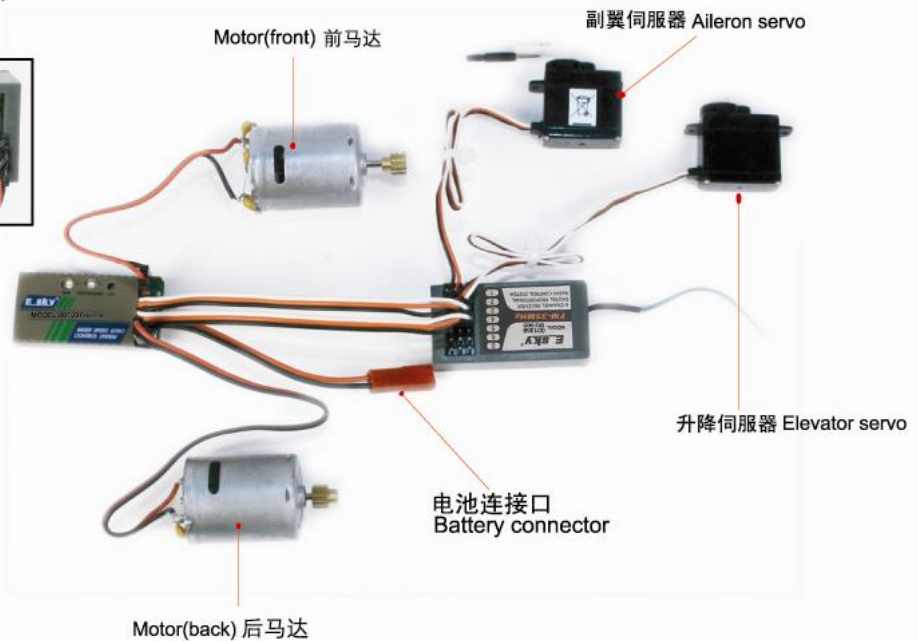
CH 2 Elevator servo 升降伺服器接口 connector
CH 1 Aileron servo 副翼伺服器接口 connector



前马达接口 Motor(front) connector



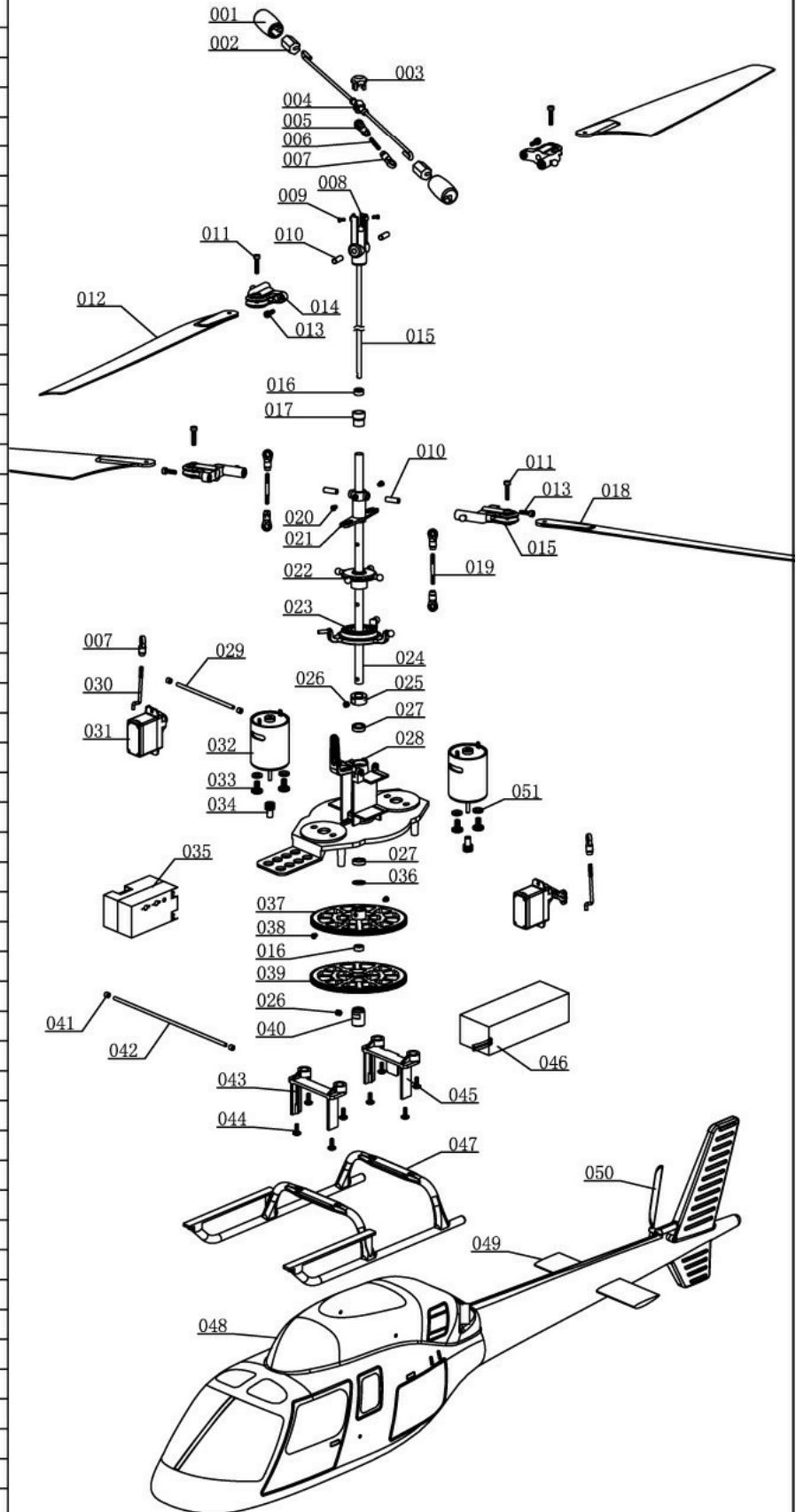
后马达接口 Motor(back) connector



Exploded view

E_SKY®

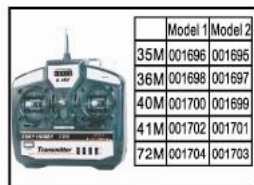
序号 Item Number	名称 Description	用量 Qty need	规格 specification
001	稳定锤Stabilizing weight	2	
002	配重块Balance weight	2	
003	旋转头盖Switching brainpan	1	
004	平衡翼杆Flybar	1	
005	单孔拉杆B Control link B	1	
006	无头螺杆Screw w/o head	1	M2*10
007	单孔拉杆A Control link A	7	
008	主旋转头A Inner shaft A	1	
009	圆头十字螺丝Round cross screw	2	ISO1.4*3
010	销子Dowel	4	Ø3*8
011	内六角螺丝Inner hexagonal screw	4	M2*10
012	主旋翼A Plastic blade A	2	
013	内六角螺丝Inner hexagonal screw	4	M2*8
014	主翼夹头Main blade clamp	4	
015	主轴A Main axis A	1	Ø3*188
016	滚珠轴承Rolling ball bearing	2	Ø3*Ø6*2.5
017	轴承座Bearing set collar	1	
018	主旋翼B Plastic blade B	2	
019	无头螺杆Screw rod w/o head	2	M2*20
020	半螺纹圆头十字螺丝 Half thread across screw with round head	2	M2*3
021	主旋转头A Inner shaft A	1	
022	倾斜内盘Inner swashplate	1	
023	倾斜外盘Outer swashplate	1	
024	主轴B Main axis B	1	Φ4*Φ5*149
025	定位环Fix collar	1	Ø5*Ø10*5
026	无头内六角螺丝 Inner hexagonal screw w/o head	2	M3*3
027	滚珠轴承Rolling ball bearing	2	Ø5*Ø8*2.5
028	机架Main frame	1	
029	机身支杆A Airframe link bar A	1	∅2*70mm
030	拉杆Push-rod	2	M2*29
031	伺服器Servo	2	
032	马达Motor	2	370
033	圆头十字螺丝Round cross screw	4	ISO3.0*5.8
034	主马达齿Main motor gear	2	M=0.5 T=11
035	三合一接收机"3in1"+Receiver	1	
036	台阶垫片Sidestep lusion	1	Ø5*Ø8*5.5
037	齿轮B Gear B	1	M=0.5 T=120
038	半螺纹圆头十字螺丝 Half thread across screw with round head	2	M2*2.5
039	齿轮A Gear A	1	
040	齿轮固定环Gear fix collar	1	Ø3*Ø8*11
041	胶套Rubber sheath	4	Φ1.5*Φ3*4
042	机身支杆B Airframe link bar B	1	Ø2*100mm
043	前电池架Front battery holder	1	
044	伞头十字螺丝Cross umbrella head screw	8	M2*6
045	后电池架Back battery holder	1	
046	锂电池Li-polymer battery	1	11.1V800mAh
047	滑撬Skid set	1	
048	机身Airframe	1	
049	水平翼Horizontal fin	1	
050	尾旋翼Tail rotor blade	1	
051	垫片B Spacer B	4	∅3.1*∅6*0.8



机体炸散图

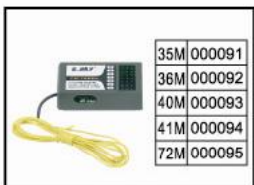
Spare parts picture

E SKY®



发射机
Transmitter

000155



接收机
Receiver

000152



三合一
"3in1"

000204



锂电池
Li-polymer battery

000837



电源适配器
Switching adapter

000512



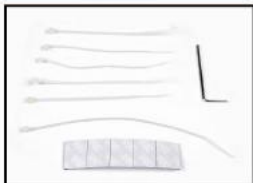
伺服器
Servo

000659



锂电池充电器
Charger

000648



工具组
Allen key/paster strap

000649



前马达组
Motor(front)

000654



后马达组
Motor(back)

000196



稳定锤
Stabilizer set

000655



主旋翼头A
Center hub set A

000647



主旋翼头B
Center hub set B

000839



螺丝组
Screw set

000650



轴承
Bearing

000651



轴承
Bearing

000652



主旋翼A
Plastic blade A

000653



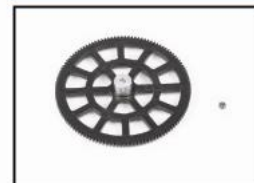
主旋翼B
Plastic blade B

000656



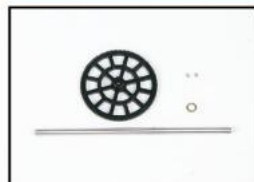
主翼夹头
Main blade clamp

000657



主动齿轮A组
Pinion gear set A

000658



主动齿轮B组
driving gear set B

000660



倾斜盘
Swashplate set

000661



轴承固定组
Bearing fixed set

000662



单孔拉杆
Single hole push rod

000663

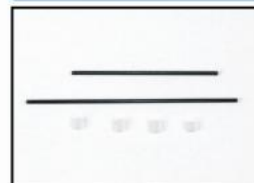


双孔连杆
Ring-link push-rod

000664



电池架
Battery hanger set



机壳支杆
Cabin shore set



机架
Main frame



滑撬组
Landing skit set



机壳组
Canopy