

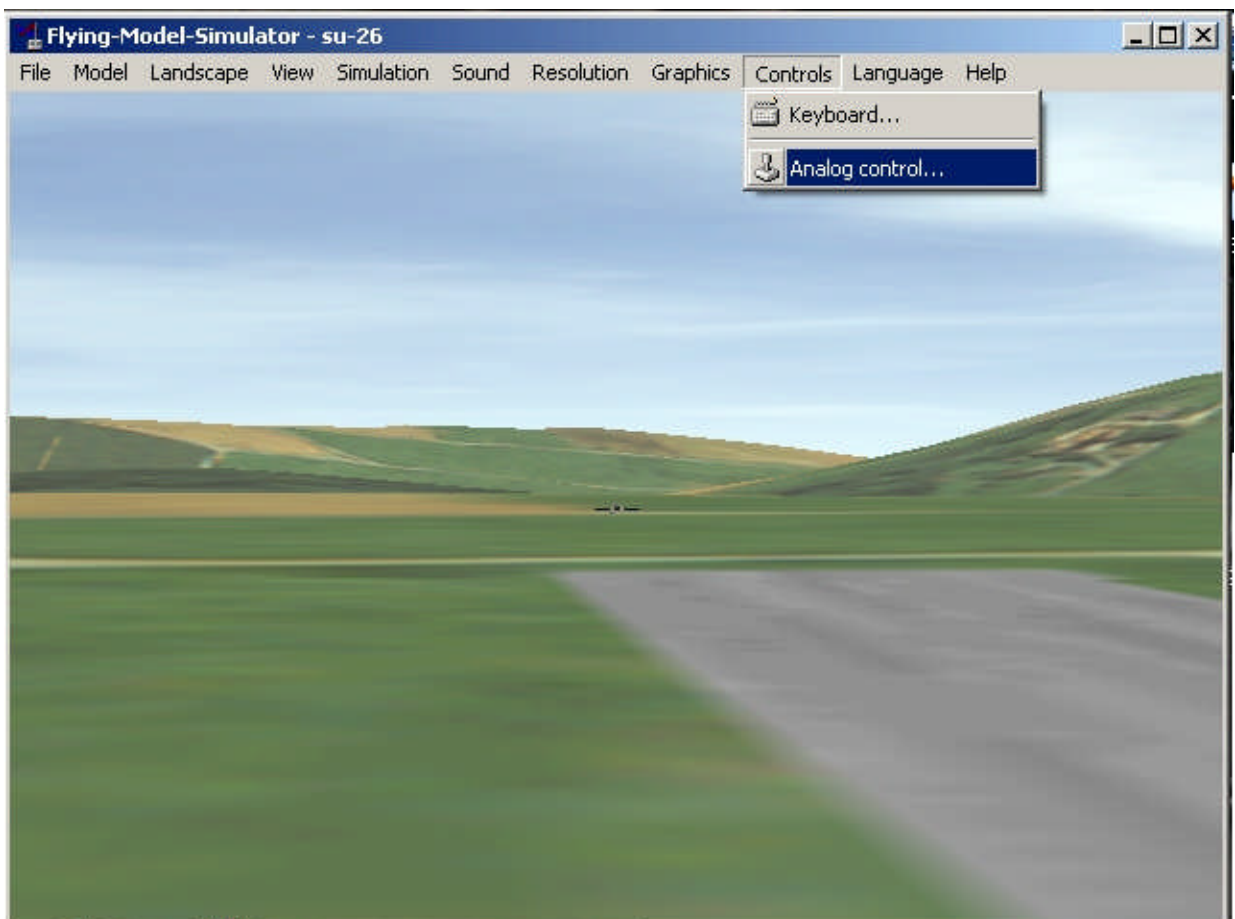
Installing FMS "fmsdisk01.exe" & Set-up for FMS to Transmitter Remote

First just to make sure: you are running Windows XP & all other programs have been turned off.

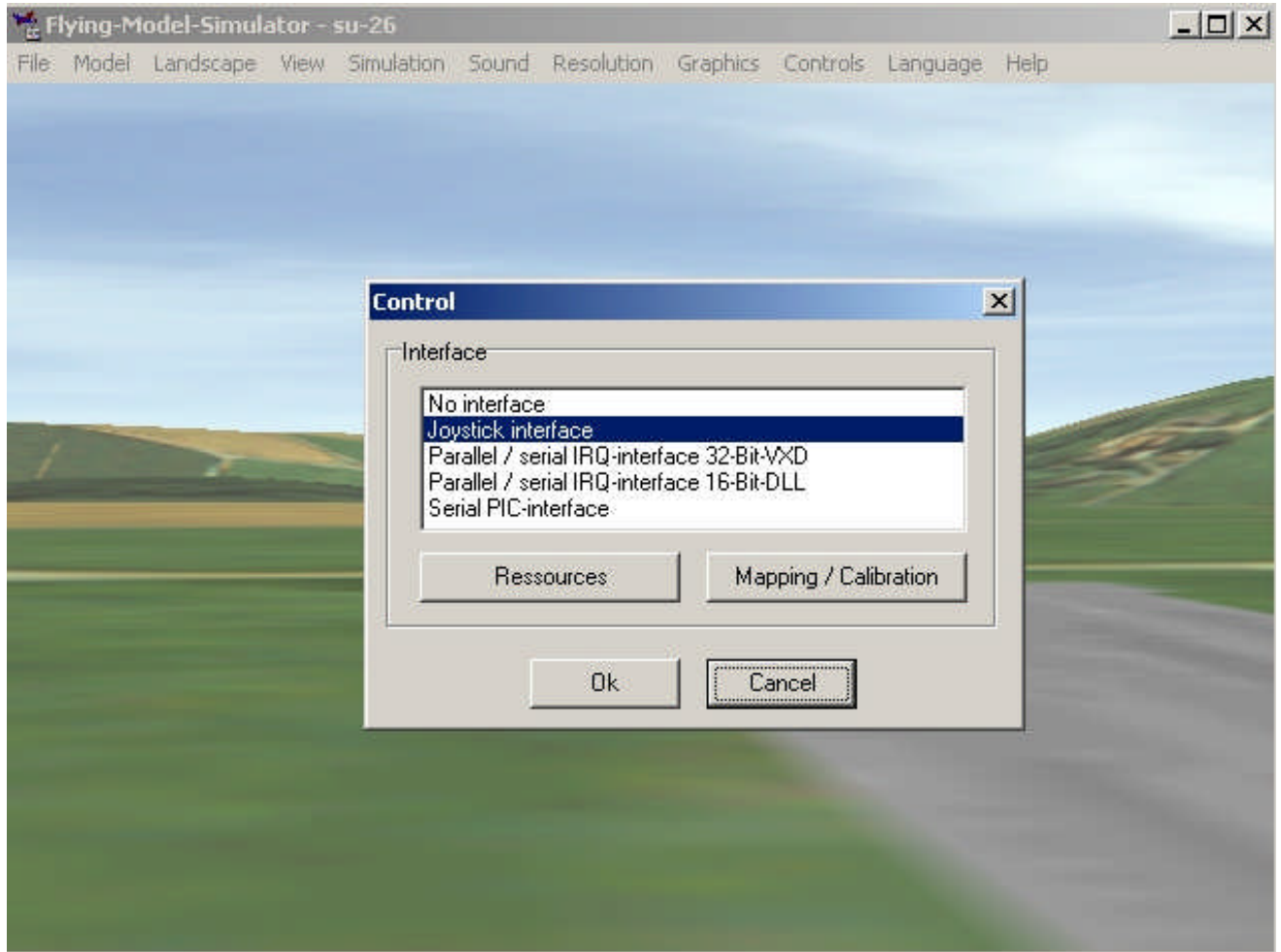
Please first download "fmsdisk01.exe" from here. And Be Sure to save that file to your DESKTOP. Open or Run the "fmsdisk01.exe" file. This will now install the actual software into your computer system, please install English version (for most people). Once the FMS software is completely installed, you can now run the Flight Module Simulator (FMS) on your computer. ***Window Vista Computer Users, Please See Below***

Please first make sure your Transmitter(TX) (either real Transmitter or the fake one) is plugged directly to your computer via USB port. (USB port is much easier to work with & Real Transmitter needs Power Light ON to Operate on computer, the Fake remote does not need any battery to operate.) Once the remote is plugged in, now please run the Flight Module Simulator (FMS) via the Short Cut.

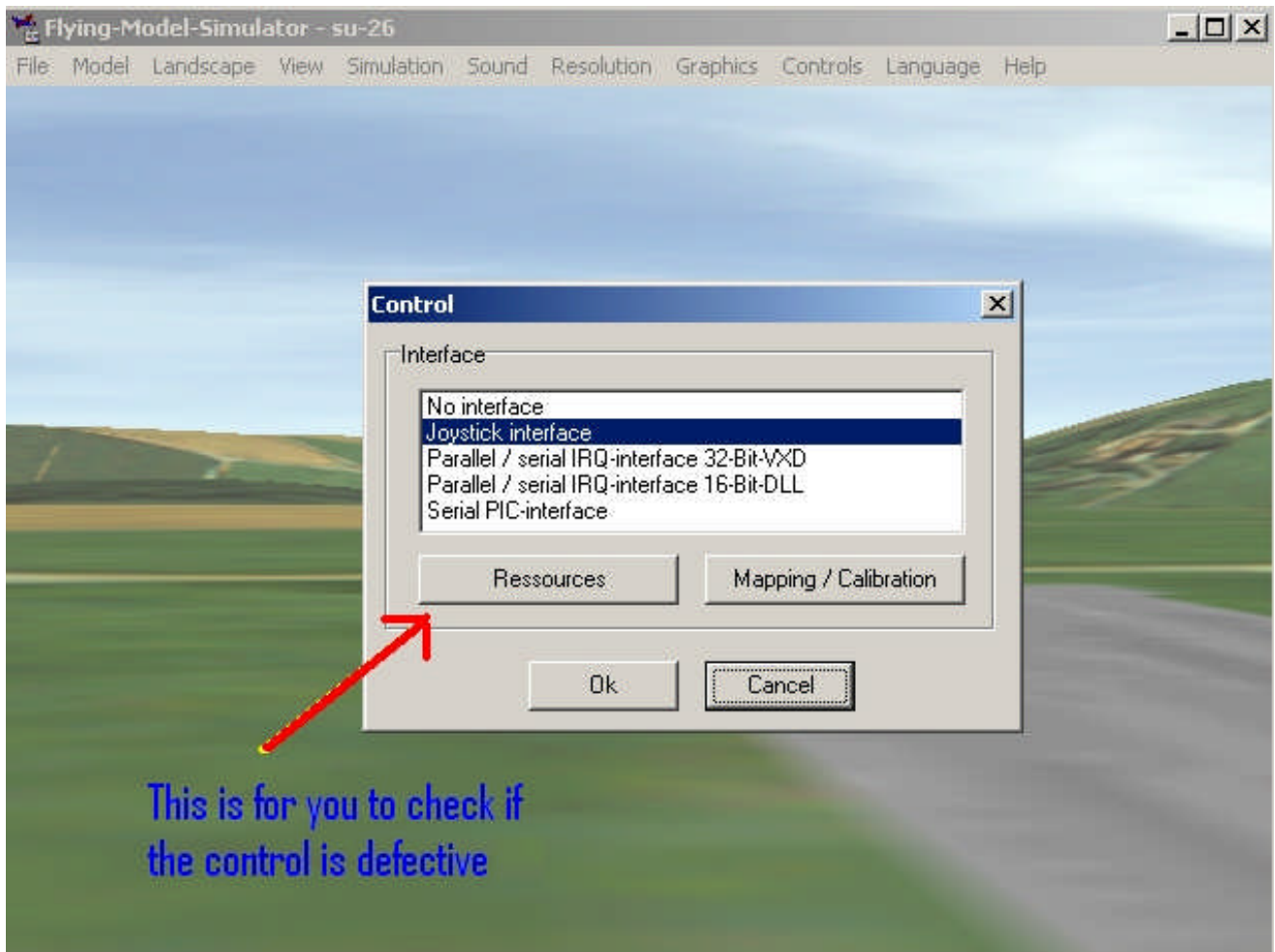
For every new installation of the FMS you will always need to configure the FMS program to "correctly" accept commands from the transmitter(TX), so that the controls / buttons work EXACTLY like they would on a real R/C Helicopter or R/C Plane. To configure the FMS program to your Transmitter(TX), Please follow the Below pictures & instructions.



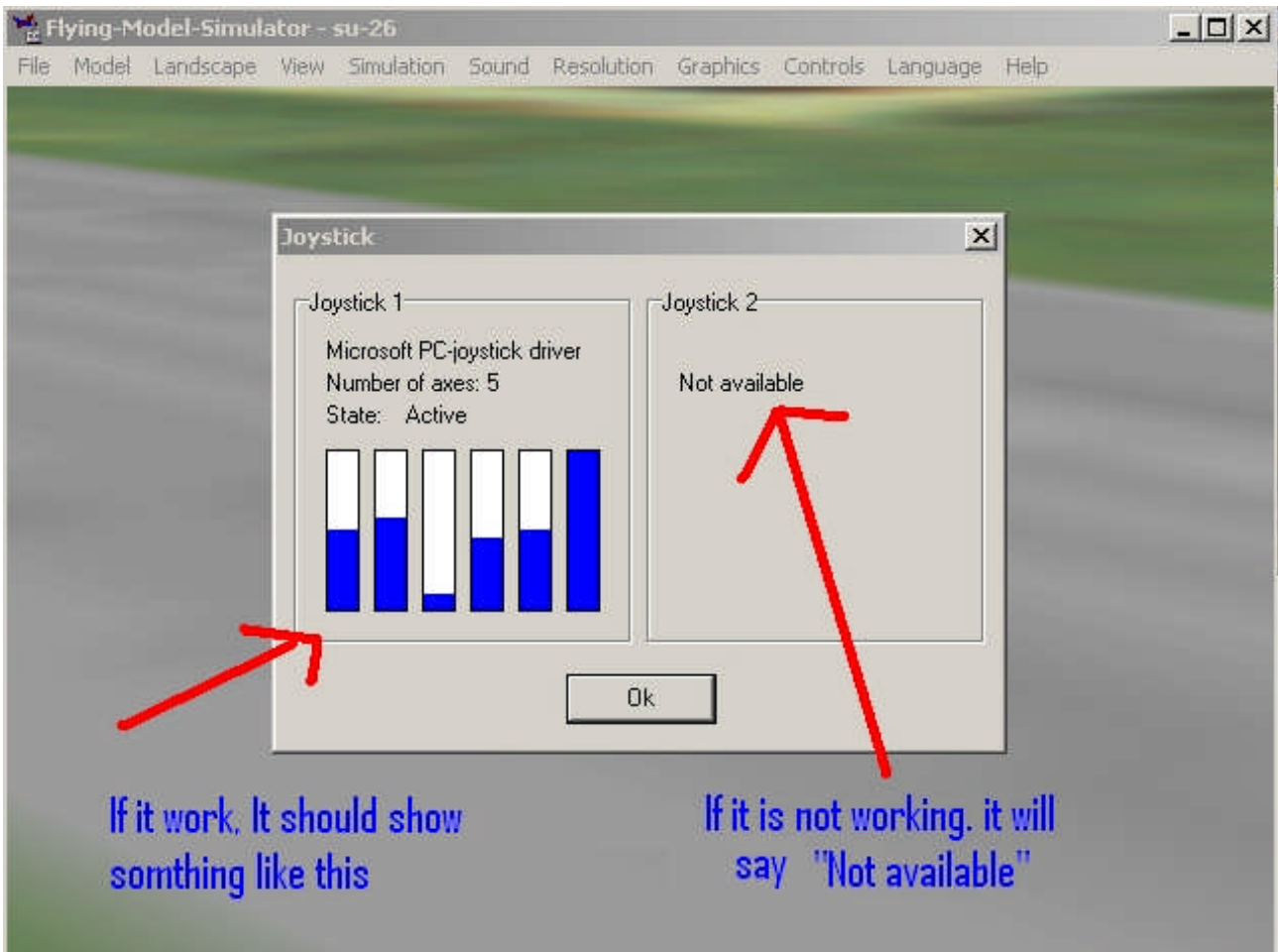
1) So FMS is installed on your computer, Open or Run the FMS program and this Screen will appear. Notice Top Row contains all the commands for configuring / Editing this software. Please Go to "Controls" & then "Analog Control".



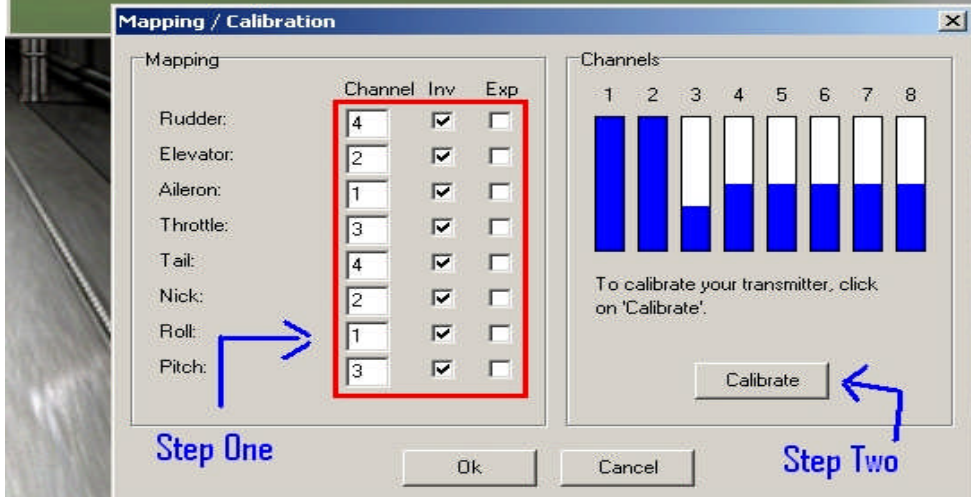
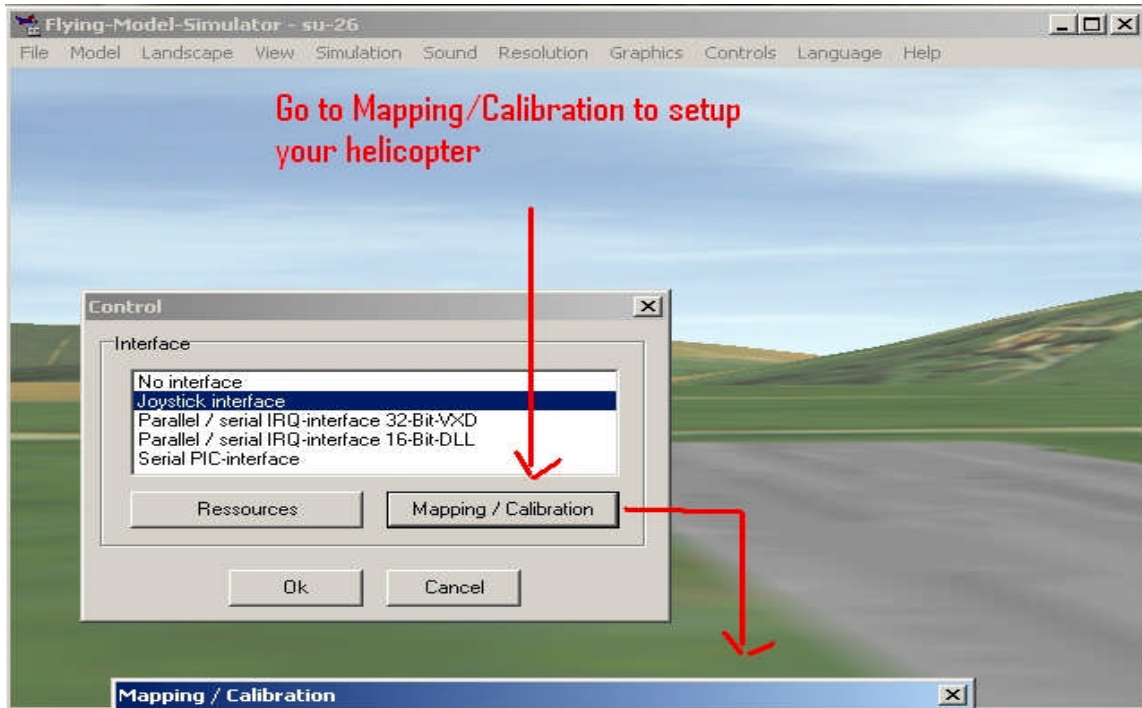
2) A box will appear, Please Highlight "Joystick Interface".



3) Under "Joystick Interface", please first Click on "Resources" to check to see if your Computer Recognizes the Transmitter(TX) Remote that should be plugged into your computer via a USB port.



4) Once you click on "Resources", This screen will pop up. It will display information under "Joystick 1" and "Joystick 2". Underneath our above picture "Joystick 1" says "Microsoft PC-joystick driver" which is a CONFIRMED SUCCESS. This means your computer is able to read the TX Remote that is Plugged into the Computer. As long as the "Microsoft PC-joystick driver" message is there along with 6 blue/white bars, either under Joystick 1 or Joystick 2, means Success. Please hit "Ok" button to get back to previous menu. (**things to try if you are not getting the right message: try unplugging all other game devices/remotes from your computer [leaving your mouse & keyboard plugged in], try using various USB ports to plug into, try using other TX remotes on FMS, etc...)

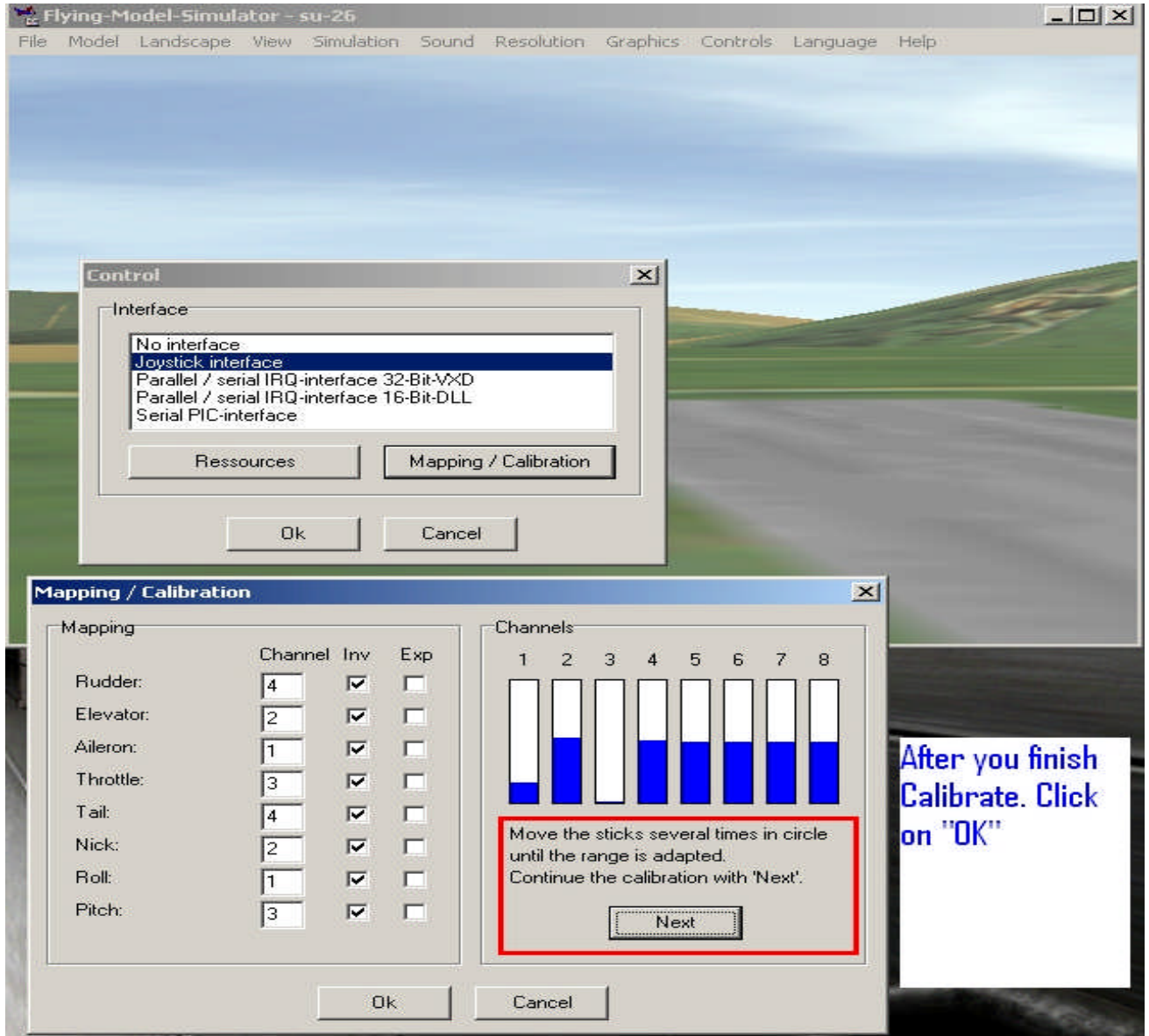


Follow the setting on Step One. and then click on Calibrate.

5) Now click on "Mapping / Calibration". The screen that pops up is the HEART & SOUL of configuring FMS to the TX remote.

STEP ONE: Please Make Sure to set the Numbers & Check the boxes the way you see it here. Under "Channel" column the numbers should read "4,2,1,3, 4,2,1,3," TOP going DOWN and all the Boxes under the "Inv" column should be Checked.

STEP TWO: Now click on the "Calibrate" button. The "Next" button will come up.

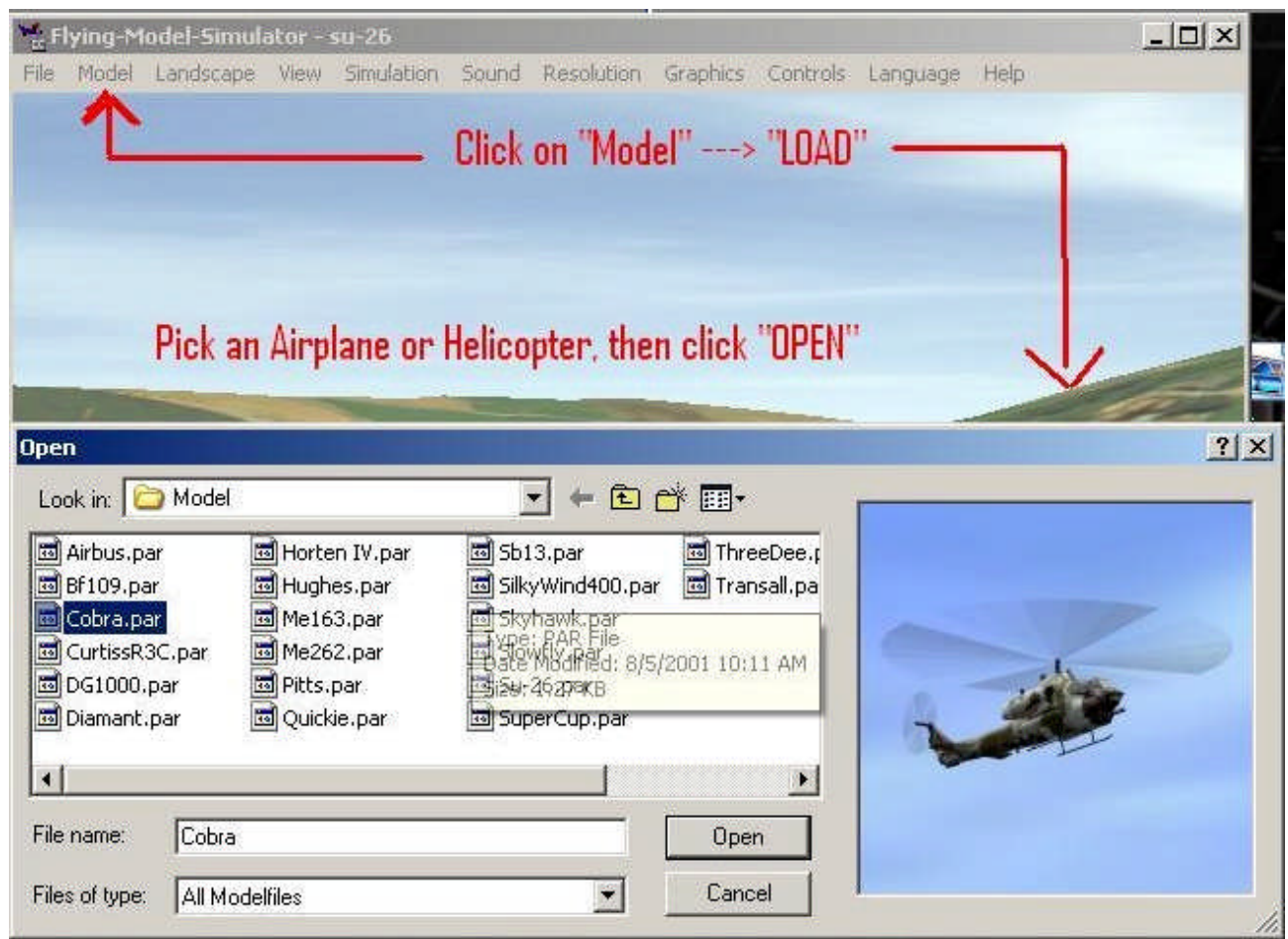


6) While the "Next" button is on the screen, you will need to PHYSICALLY move the the two JoySticks (Left & Right) so that your FMS can properly read the commands coming from the TX remote.

START OFF: with the Left joystick, move the Left joystick up, down, and all around. Notice which two graphs go up & down with your Left joystick movement. The answer is Channel 3 & 4, but specifically Left Joystick up/down controls Channel 3 and Right Joystick left/right controls Channel 4. Please return the Left joystick to the South Position, throttle all the way down.

NEXT: with the Right joystick, move the Right joystick up, down, and all around. Notice which two graphs go up & down with your Right joystick movement. The answer is Channel 1 & 2, but specifically Right Joystick up/down controls Channel 2 and Right Joystick left/right controls Channel 1. The right joystick is spring loaded in all directions, so that stick just stays in the middle once you leave it alone.

FINALLY: Not touching any joystick, notice how Channel 3 is all Blue or all White, Because your throttle is all the way down. good indication. Channel 1, 2, and 4 are about Middle, because your JoySticks are in the middle. Please now click the "Next" button and the "Finish" button. DO NOT click any "Cancel" buttons. You will need to exit out of the Menu Boxes and get back to your Run-Way with Helicopter or Airplane, by clicking on the "Ok" button(s).



7) Once back at the FMS Run-Way, you SHOULD load a new Heli/Plane. Follow the above picture, Please click on "Model", then click on "Load", then open up the "Model" Folder and load any Heli or Plane file. (Heli or Plane are listed as .par files)

SHORT-CUT: Please press the "i" button on keyboard to INSTANTLY Re-Load the same heli / plane that you previously had. Doing this insures that the plane/heli will load up with the new configuration that we just made. (you can also use this trick when you crash, pressing the "i" button is much faster) Now you can finally test your FMS remote control skills. Be sure that both the Left & Right Joysticks are making the Heli / Plane do what YOU think they are SUPPOSE to do. If they are not then maybe something was not set right (go back double-check) or just that your THINKING is WRONG! lol.

Extra Stuff (up vs. down OR down vs. up):

Some RC plane pilots like to Invert their up & down. I like to fly r/c planes (NON Inverted) with my right joystick WHEN it is set like this: Forward stick = plane goes UP, Backward stick = plane goes DOWN, Left stick = plane banks left, & Right stick = plane banks right. This is how I set up my TX remotes on FMS. For those who like an Inverted UP vs DOWN, meaning Forward stick = plane goes down & Backward stick = plane goes up. Please go back to Step 4. Under "Mapping / Calibration" you will need to UNCHECK the two boxes under the "Inv" next to Channel 2, because if you remember Right joystick up & down makes channel 2 move. Uncheck those two boxes and go through steps 4 - 6 again, now your right joystick UP / Down is now inverted. **You can apply this method to any of the 1-4 channels on "Mapping / Calibration", so if ALL your Controls are backwards just uncheck ALL the boxes under the Inv column & repeat Step 4-6.

Plane / Heli does not stay on Run way, It takes off when I hit "i":

Please make sure your THROTTLE TRIM is all the way down, NOT IN MIDDLE. Your throttle trim is the Vertical Slider Bar to the LEFT of the ON/OFF button in the middle of TX remote, MAKE SURE that slider is all the way DOWN. The other 3 slider bars should remain in the middle.

Setup Instruction for WINDOWS VISTA

For those of you who have Windows Vista (Why did you get Vista???) you will need to add a file into the 'FMS' folder in order to successfully run FMS on Windows Vista. If you do not, you WILL get an error message "missing a file [blah blah] d3drm.dll" when you do try to run FMS. So just follow the below instructions and add that file to your FMS folder before you start up the FMS program.

Please download the below file: (http://www.dlldump.com/download-dll-files_new.php/dllfiles/D/d3drm.dll/5.1.2600.0/download.html) to your desktop.

Go to My computer > C Drive > Program Files > FMS

OR

Go to Start > Run > C:\Program Files\FMS

You will need to place a copy of "D3DRM.DLL" file in the FMS folder, Highlight 'd3drm.dll', Right-Click it and hit "COPY', move mouse to the FMS folder and Right-Click and hit Paste. A copy should now be in the FMS folder.

Launch the Flight Simulator again.