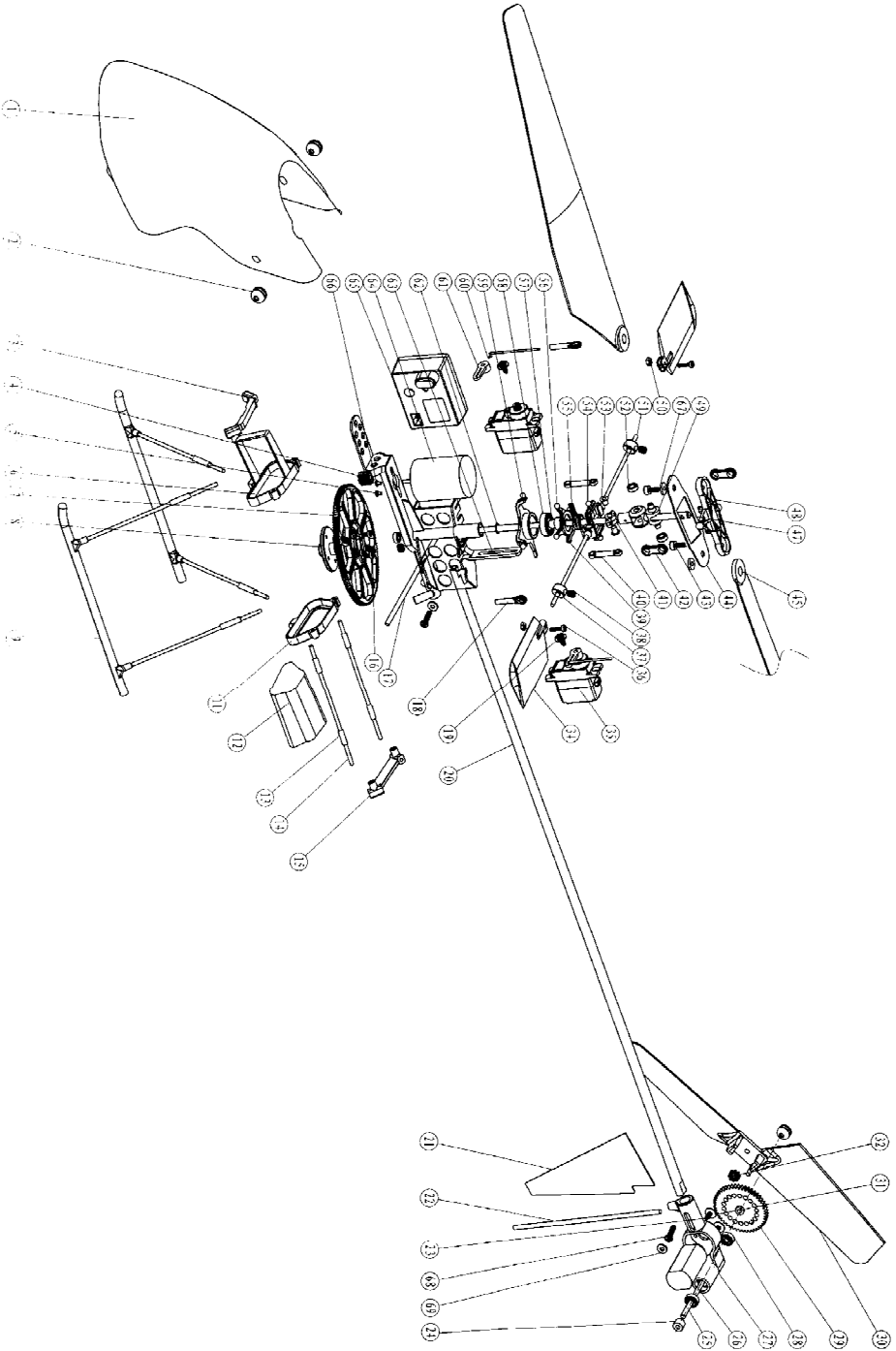


HM 4#



Part Code	Description	Specification	Qty
001	Canopy		1
002	Rubber retainer ring		3
003	Connecting pin for safety tiebar (L)		1
004	Main motor gear		1
005	Cross recessed pan head screw	M3*5	2
006	Battery holder (L)		1
007	Main gear		1
008	Firing cover for main axis		1
009	Shield landing gear		2
010	Battery holder (R)		1
012	Battery		1
014	Rubber hose		8
015	Connecting rod for battery holder		6
016	Connecting pin for battery holder (R)		1
017	Servo motor socket head screw	M2*4	4
018	Fixed link of canopy		1
019	Servo link rod		2
020	Trapping screw with gasket	PWAL 7*4	2
021	Tail boom		1
022	Tail stabiliser		1
023	Tail knighthead		1
024	Cross recessed pan head screw	PN11.4*3	2
025	Rear axle rod (L)		1
026	Rear axle		1
027	Tail motor		1
028	Tail holder		1
029	Tail bearing		2
030	Tail gear		1
031	Tail rotor blade		1
032	Flat gasket (Class A)		2
033	Tail motor gear		1
034	Flybar blade		2
035	9g Servo-5		2
036	Cross recessed pan head screw	PN12*6	2
037	Bob-weight		2
038	Hexagon socket pan head locking screw	M3*5	5
039	Columnar Pin		1
040	Long tiebar		2
041	Inner cover of rotor head		1
042	Short tiebar		2

Part Code	Description	Specification	Qty
043	Cross recessed pan head screw	PN12.5*6	2
044	Main rotor blade holder		1
045	Main rotor blade		2
046	Main axis		1
047	Rotor head		1
048	Rotor head core		1
049	Rotor head core		1
050	Type-1 hexagonal nut	M2	2
051	Flybar blade rod		1
052	Bearing of rotor head core	Φ3*Φ6*2.5	4
053	Cover of rotor head core		2
054	Ring of rotor head		1
055	Guiding ring		1
056	Inner swastiplate		1
057	Copper ball		1
058	Swastiplate bearing	Φ7*Φ13*4	1
059	Outer swastiplate		1
060	Servo connecting rod		2
061	Servo ballbank		2
062	E-type circlip		1
063	Main frame		1
064	Main motor		1
065	Reedifer		1
066	Small gasket (Class A)	Φ3*Φ3*0.8	2
067	Big gasket	Φ2.5*Φ10*1	2
068	Cross recessed pan head tapping screw	PN12.5*7	2
069	Flat gasket (Class A)	Φ2.5*Φ5.5*0.5	2